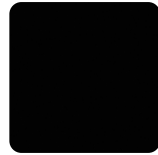


## LAMINATE FINISHES



Autumn Maple  
AM



Black  
BL (Base Only)



Black Walnut  
BW



Cappuccino  
Dream  
CD  
(textured finish)



Desert Sand  
DE



Driftwood Grey  
DD  
(standard smooth finish  
- only available in 1" and  
1½" material)



Driftwood Grey  
DW  
(textured finish - only  
available in ¾" and  
1½" material)



Evening Zen  
EZ



Golden Ash  
GA



Graphite  
GT  
(base only)



Grey  
GR



Grey Dusk  
GD



Hardrock Maple  
HM



Noce Cocoa  
NC  
(slight textured finish)



Pure White  
PW



Royal Mahogany  
RM



Seaside White  
SW



Sugar Maple  
SM



Volcanic Ash  
VA  
(slight textured finish)



Winter Wood  
WW



White Board  
WB  
(available in ¾" material  
-writeable/wipeable)

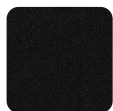
## TACKBOARD FABRICS



Storm  
HW153



Mercury  
HW094



Midnight  
HW009



Gold  
HW210



Burgundy  
HW212



Mica  
HW214



Hemp  
HW216



Citrine  
HW218



Flamingo  
HW220



Indigo  
HW222



Turquoise  
HW224



Stone  
HW226

## ACOUSTIC PET



Charcoal Grey



Storm Grey

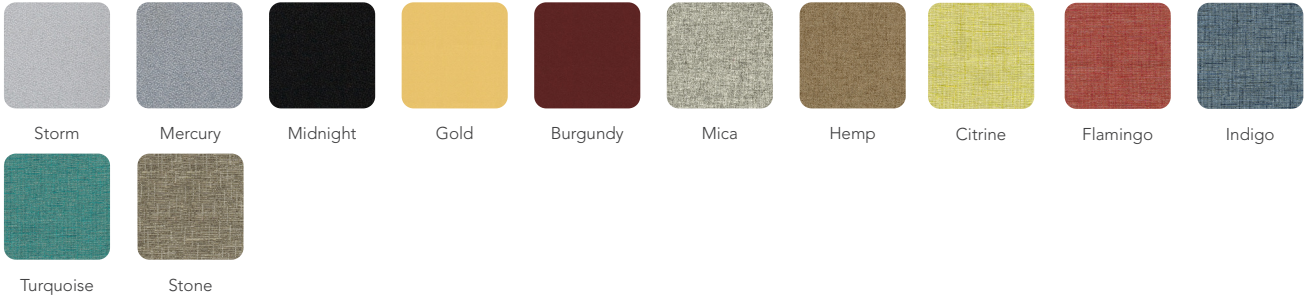
**NOTE:** As it is not possible to print exact colour matches and textures 100% accurately, the colours shown are representative only and may vary from the actual product colours.

Colour selection is current at time of print. Refer online for updated details.

# FINISHES AND FABRICS

## CUSHION FABRICS

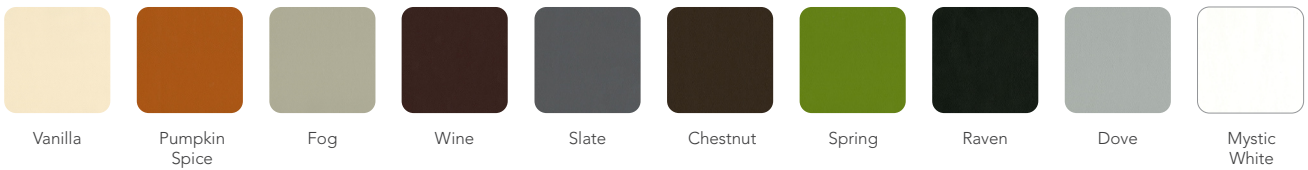
### ESCAPE



### HEAVENLY



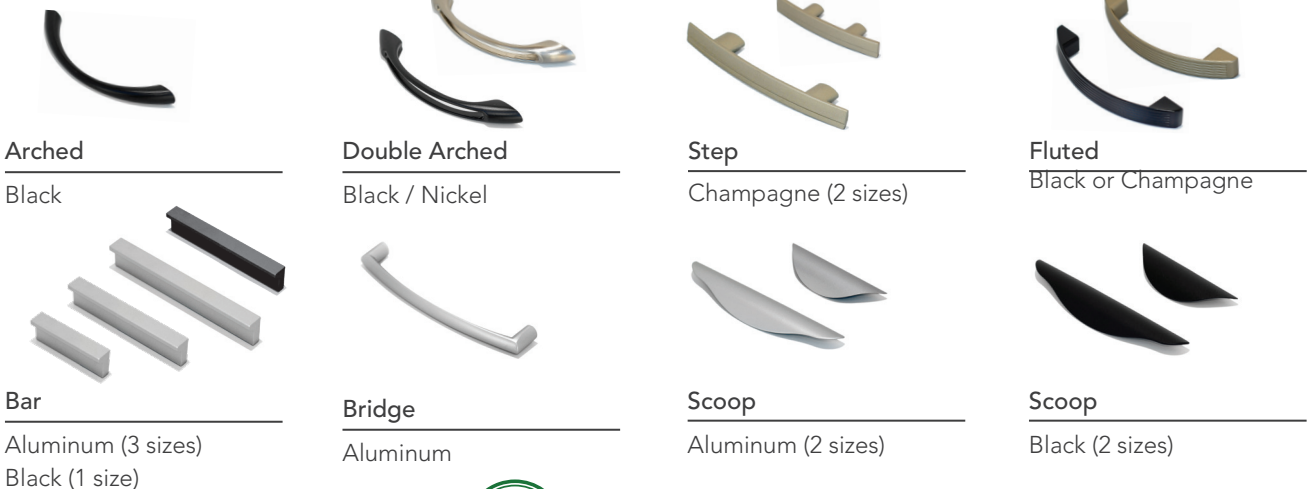
### ULTRALEATHER



### PLEXI



## HANDLES



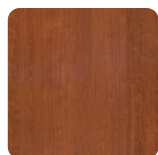
### ECO STORY

Heartwood and HDL are committed to supplying office furniture products in an environmentally responsible manner. We are proud to partner with like-minded corporate citizens who align environmental stewardship with their company's core values and goals.

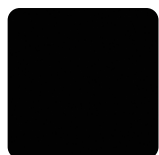
## HIGH-PRESSURE LAMINATE FINISHES

**NOTE:** High-Pressure finishes are approximations and not **exact** matches to Heartwood Manufacturing finishes. For more detailed finish information, please see the manufacturer's swatch (code provided).

For custom High-Pressure pressure matches or alternate choices, contact Customer Service for a quote [cs@heartwood.ca](mailto:cs@heartwood.ca)



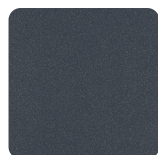
Autumn Maple  
AM-HP  
Formica 758



Black  
BL-HP  
(base only)  
Formica 909



Black Walnut  
BW-HP  
Heartwood  
Proprietary



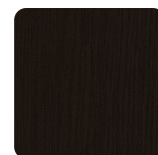
Charcoal Matrix  
CM-HP  
Formica 515



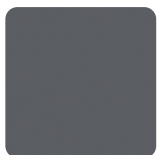
Desert Sand  
DE-HP  
Heartwood  
Proprietary



Driftwood Grey  
DW-HP  
Heartwood  
Proprietary



Evening Zen  
EZ-HP  
Formica 9374



Graphite  
GT-HP  
(base only)  
Formica 912



Grey  
GR-HP  
Formica 927



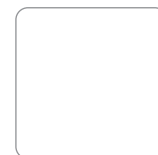
Grey Dusk  
GD-HP  
Heartwood  
Proprietary



Grey Matrix  
GM-HP  
Formica 507



Hardrock Maple  
HM-HP  
Heartwood  
Proprietary



Pure White  
PW-HP  
Formica 459



Royal Mahogany  
RM-HP  
Pionite WY351



Seaside White  
SW-HP  
Formica 9285



Sugar Maple  
SM-HP  
Formica 7288



Winter Wood  
WW-HP  
Heartwood  
Proprietary

## PREMIUM HIGH-PRESSURE LAMINATE FINISHES

**NOTE:** For Premium High Pressure Laminate Finishes contact Customer Service for a quote [cs@heartwood.ca](mailto:cs@heartwood.ca)



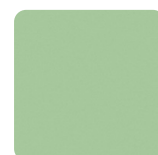
Clementine  
CO-HP  
Formica 2962



Spectrum Red  
SD-HP  
Formica 845



Chrome Yellow  
CW-HP  
Formica 1485



Light Green  
LG-HP  
Formica 8794



Spectrum Blue  
SB-HP  
Formica 851



Weathered  
Beamwood  
WD-HP  
Formica 6410



Golden Ash  
GA-HP  
Arborite W450



Noce Cocoa  
NC-HP  
Arborite W460



Volcanic Ash  
VA-HP  
Arborite W479

**Heartwood Manufacturing Ltd.**  
251 Adams Rd, Kelowna, BC V1X 7R1  
T 1 800 567 3060  
F 250 765 1213

[www.heartwood.ca](http://www.heartwood.ca)